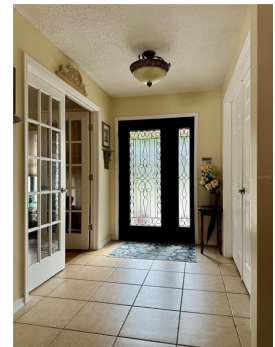
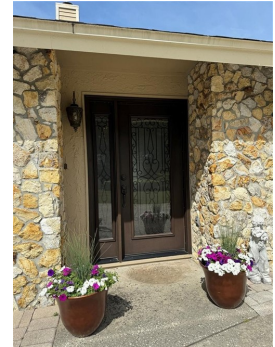




\$ 850,000



1939 Broadleaf Ct, Windermere, FL 34786

- » Beds: 5 | Baths: 2 Full, 1 Half
- » MLS #: 06191729
- » Single Family | 2,660 ft² | Lot: 16,117 ft²
- » More Info: 1939BroadleafCt.IsForSale.com



Jessica Camacho
(407) 450-9293
flhomesbyjess@gmail.com
<http://www.flhomesbyjess.com>



Property Pros
141 E Irlo Bronson Memorial Hwy
St Cloud, FL 34769
(407) 879-7591

Remarks

Price Improvement!!!! Discover the epitome of lakeside living at 1939 Broadleaf Ct, nestled in the highly desirable Windermere Downs community. This charming 5-bedroom, 2.5-bathroom home boasts deeded access to the coveted Butler chain, complete with a community boat ramp, dock, and private beach for endless waterfront adventures. Nestled on an expansive lot within a tranquil cul-de-sac, this residence offers the perfect blend of serenity and privacy. Cozy up by the wood-burning fireplace on cool evenings, or bask in the Florida sunshine by the inviting built-in pool, and expansive fenced patio area, ideal for private relaxation and entertaining. Inside, the home exudes warmth and elegance with stunning wood flooring, ceramic tile, and vaulted ceilings in the primary bedroom. The kitchen features upgraded solid wood cabinets with glass faces, granite countertops, and a layout designed for both functionality and style. Windermere Downs presents an array of amenities, from a community park to playgrounds and tennis/pickleball courts, all accessible by a leisurely golf cart ride. Embrace the vibrant growth of downtown Windermere, just a short drive away. where local businesses and the beloved Friday farmers market await. With easy access to major highways, theme parks, and

